

Product Features

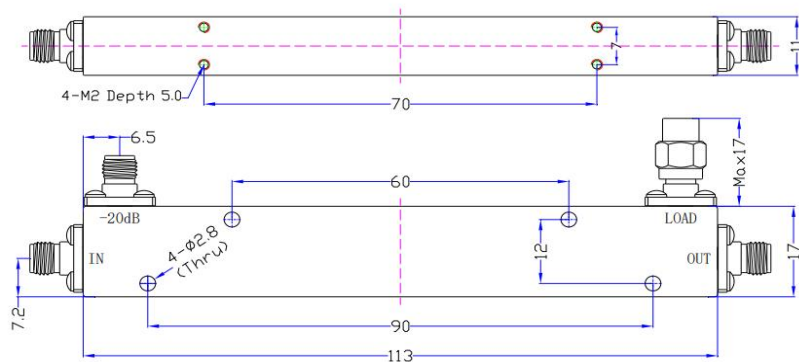
- Power handling up to 10W
- Ultra Wide band operation
- Functional Bandwidth : 0.5GHz to 18GHz
- High isolation within operational band
- Low Insertion Loss
- Stable performance over temperature
- High peak to average handling capability



SPECIFICATIONS

Frequency Range(MHz)	500~18000MHz
Coupling	20dB±1.2dB
Frequency Sensitivity	±1.0dB max.
Directivity	10dB min.
Main Line VSWR	1.5 max.
Secondary Line VSWR	1.5 max.
Insertion Loss	1.4dB max.(excluding theoretical coupling loss 0.04dB)
Power Handling	Incident: 10W max / Reflected: 2W max.
Impedance	50 Ohms
RF Connectors	SMA Female
Surface Finishing	Black Paint
Operating Temp.	-30°C~+70°C
Humidity	95%
Dimensions	113×17×11mm
Weight	70g

Outline Drawing(mm)



Outline Tolerances ±0.5mm (0.02inch)