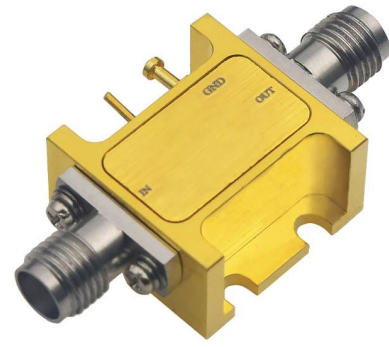


**SPECIFICATIONS**

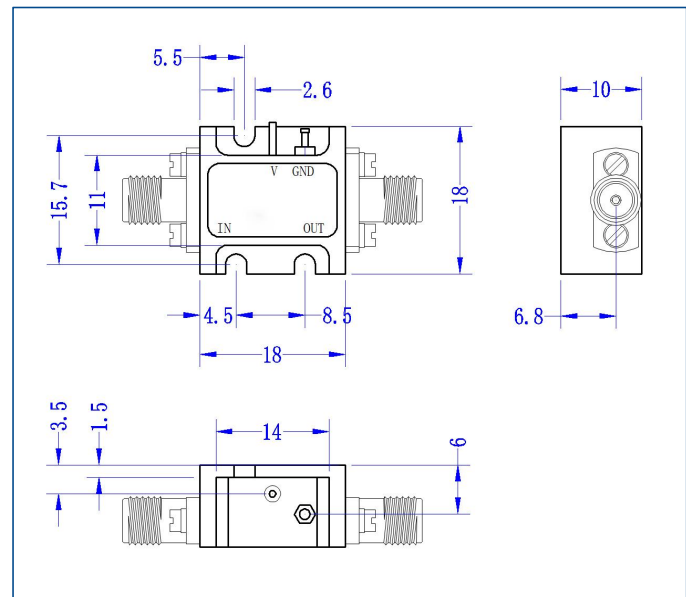
Frequency Range:	2000~4000 MHz
Gain	28dB min.
Gain Flatness	±2dB max.
Noise Figure	1.8dB max. / 1dB typ.
VSWR	2.0 max. / 1.5 typ.
Output Power(P-1dB)	10dBm typ.
Impedance	50Ω
Supply Voltage	+12V
Supply Current	150mA
Operating Temp.	-40°C~+70°C
RF Connectors	SMA Female removable (0.38mm pin)



**Typical Performances**

Freq. (GHz)	VSWR (S11)	VSWR (S22)	Small-Signal Gain (S21) dB	Power Output @1dB Compression (S21) dBm	Noise Figure dB
Unit	:1	:1	dB	dBm	dB
1.5	3.04	1.25	28.06	13.5	1.14
1.8	1.87	1.25	29.01	13.8	1.22
2.1	1.37	1.27	29.22	14	0.93
2.4	1.16	1.27	29.35	13.7	0.83
2.7	1.09	1.22	29.40	12.1	0.83
3.0	1.13	1.14	29.55	10.9	0.66
3.3	1.24	1.05	29.71	10.4	0.62
3.6	1.42	1.07	29.91	10.1	0.75
3.9	1.70	1.17	30.01	9.7	0.77
4.2	2.16	1.24	29.75	9.8	0.64
4.5	2.78	1.26	29.15	10	0.57

**Dimensions[mm]**



**50 Ohm Typical Characteristics**

