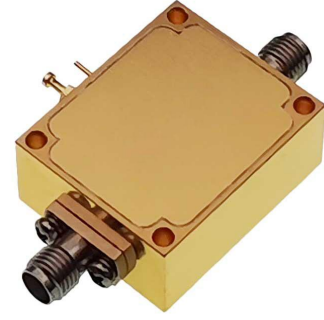


SPECIFICATIONS

Frequency Range:	1000~18000 MHz
Gain	26dB min.
Gain Flatness	±2.5dB max.
Noise Figure	2.5dB typ.
VSWR	2.5 max.
Output Power(P-1 dB)	10dBm min.
Impedance	50Ω
Supply Voltage	+12V
Supply Current	200mA
Operating Temp.	-40°C~+70°C
RF Connectors	SMA Female removable (0.38mm pin)



Dimensions[mm]

