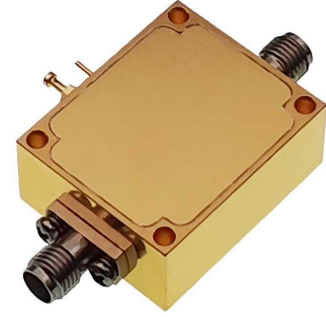


SPECIFICATIONS

Frequency Range:	18000~40000 MHz
Gain	40dB min.
Gain Flatness	±2.5dB typ.
Noise Figure	3.5dB typ.
VSWR	2.5 max.
Output Power(P-1dB)	15dBm min.
Impedance	50Ω
Supply Voltage	+12V
Supply Current	300mA
Operating Temp.	-40°C~+70°C
RF Connectors	2.92mm female (0.38mm pin)



Dimensions[mm]

