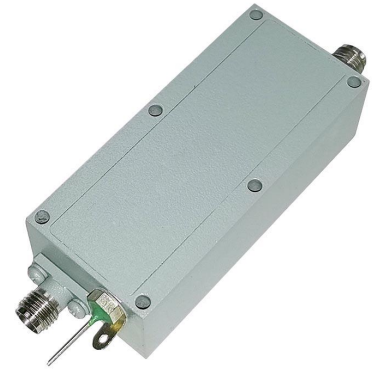


SPECIFICATIONS

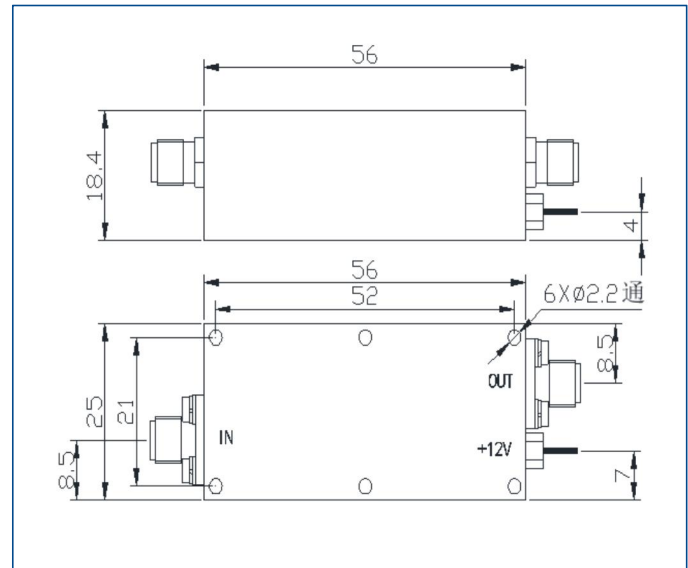
Frequency Range:	20000~22000 MHz
Gain	40dB min.
Gain Flatness	±2dB max.
Noise Figure	4.0dB max.
VSWR	2.0 max.
Output Power(P-1dB)	10dBm min.
Impedance	50Ω
Supply Voltage	+12V
Supply Current	200mA
Operating Temp.	-40°C~+70°C
RF Connectors	2.92mm Female



Typical Performances

Freq. (GHz)	VSWR (S11)	VSWR (S22)	Small-Signal Gain (S21)	Power Output @1dB Compression (S21)	Noise Figure
Unit	:1	:1	dB	dBm	dB
20	1.58	1.49	42.8	13.9	3.02
20.2	1.56	1.39	43.1	14.1	2.95
20.4	1.54	1.31	43.1	14.2	2.92
20.6	1.52	1.24	43.2	14.2	2.88
20.8	1.48	1.21	43.3	14.3	2.72
21.0	1.45	1.22	43.5	14.2	2.66
21.2	1.41	1.27	43.4	14.2	2.62
21.4	1.36	1.37	43.5	14.1	2.67
21.6	1.32	1.47	43.4	14.1	2.7
21.8	1.31	1.59	43.2	14.2	2.72
22	1.34	1.74	42.9	14.1	2.67

Dimensions[mm]



50 Ohm Typical Characteristics

