

SPECIFICATIONS

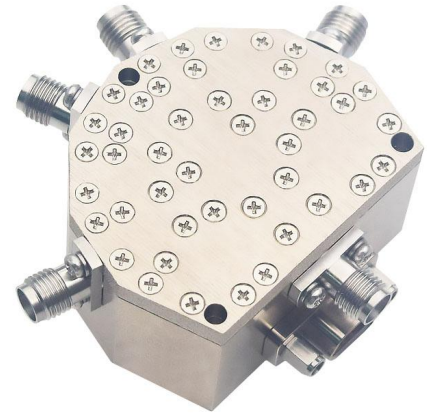
Frequency Range:	1600~6000 MHz
Impedance	50Ω
VSWR	1.6 max.
Insertion Loss	1.5dB max.
Isolation	60dB min.
Switch type	Absorptive, SP4T
Switching Time	100nS
RF Input Power(CW)	0.2 Watts
Supply Voltage	±5V
Current	300mA
Operating Temp.	-40°C~+85°C
TTL Control Connector	Solder Pin
Connector Type	SMA Female
Control Connector	J30J-9ZKP

TTL Control Table

Port No.	C	B	A
J1	0	0	1
J2	0	1	1
J3	1	0	0
J4	1	1	0

PIN Configuration

1	2	3	4	5	9	6-7-8
+5V	-5V	GND	A	B	C	NC



Dimensions[mm]

