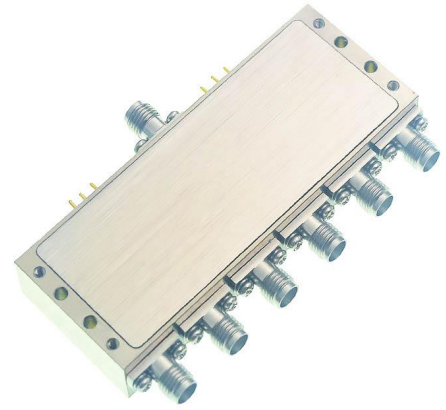


SPECIFICATIONS

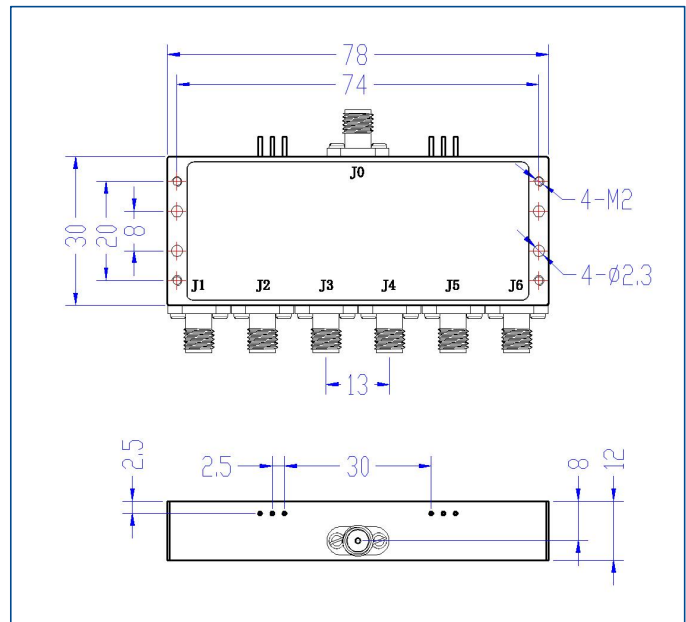
Frequency Range:	2000~6000 MHz
Impedance	50Ω
VSWR	1.8 max. / 1.5 typ.
Insertion Loss	2.5dB max. / 2.2dB typ.
Isolation	60dB min. / 70dB typ.
Switch type	Absorptive, SP6T
Switching Time	100nS
RF Input Power(CW)	0.2 Watts
Supply Voltage	±5V
Current	50mA
Operating Temp.	-40°C~+85°C
TTL Control Connector	Solder Pin
Connector Type	Field Replaceable SMA Female (0.38mm Pin)



TTL Control Table

Port No.	C3	C2	C1
J1	0	0	0
J2	0	0	1
J3	0	1	0
J4	0	1	1
J5	1	0	0
J6	1	0	1

Dimensions[mm]



50 Ohm Typical Characteristics

