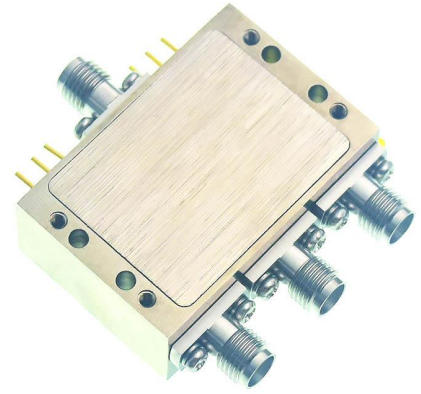


SPECIFICATIONS

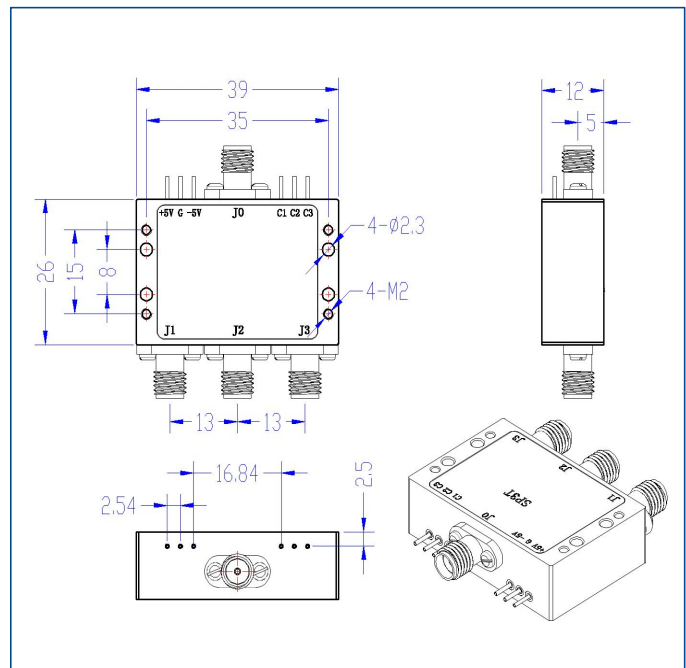
Frequency Range:	20~3000 MHz
Impedance	50Ω
VSWR	1.5 max. / 1.3 typ.
Insertion Loss	2.0dB max. / 1.6dB typ.
Isolation	60dB min. / 80dB typ.
Switch type	Absorptive, SP3T
Switching Time	100nS
RF Input Power(CW)	0.2 Watts
Supply Voltage	±5V
Current	30mA
Operating Temp.	-40°C~+85°C
TTL Control Connector	Solder Pin
Connector Type	Field Replaceable SMA Female (0.38mm Pin)



50 Ohm Typical Characteristics

Frequency MHz	VSWR (S00) :1	VSWR (S11) :1	Loss (S01) dB	Loss (S02) dB	Loss (S03) dB	Isolation (S12) dB
20	1.23	1.22	-1.56	-1.53	-1.53	-83.95
247	1.21	1.19	-0.9	-0.89	-0.88	-87.00
474	1.21	1.19	-0.92	-0.91	-0.90	-86.80
701	1.21	1.2	-0.97	-0.96	-0.95	-87.37
929	1.19	1.21	-1.07	-1.05	-1.05	-85.84
1156	1.17	1.22	-1.07	-1.05	-1.04	-86.36
1383	1.15	1.22	-1.15	-1.12	-1.12	-85.81
1610	1.12	1.23	-1.28	-1.28	-1.24	-86.65
1837	1.11	1.22	-1.45	-1.41	-1.42	-85.04
2064	1.09	1.22	-1.35	-1.33	-1.33	-85.90
2291	1.08	1.23	-1.44	-1.35	-1.43	-86.23
2519	1.05	1.25	-1.44	-1.39	-1.41	-86.16
2746	1.03	1.27	-1.58	-1.45	-1.56	-85.89
2973	1.06	1.3	-1.57	-1.49	-1.56	-86.07
3200	1.1	1.32	-1.69	-1.57	-1.69	-86.95

Dimensions[mm]



Typical Test Curve

