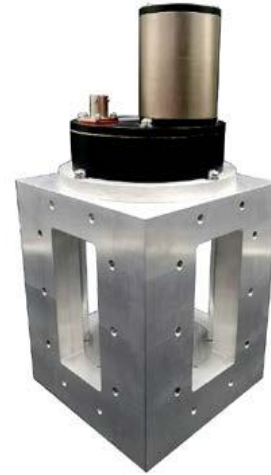


## FEATURES

- Full waveguide band coverage
- DPDT Switch type
- Rugged design

## APPLICATIONS

- Transmit-Receive system
- Electronic countermeasures system
- Commercial ground stations



## Electrical Specifications

Operating Frequency	1.72~2.61 GHz
VSWR	1.1 max.
Insertion Loss	0.1 dB max
Isolation	70 dB min.
Switching Time	300 mSec max.
Current	3A max.
DC Power Supply	+22V~+32V
Control Connector	Y50X-0807

## Mechanical Specifications

Waveguide Size	WR430
Flange	FDP22
Material	Aluminum
Inside Finish	Natural conductive oxidation
Outside Finish	Black paint on control part
Weight	About 7.8kg
Operating Temp.	-40°C~+70°C
Non Operating Temp.	-55°C~+85°C
Humidity	80%
Life	100,000 operations

## Pin Configuration

Pin	Function	Note
1	VCC1(24V)	VCC1(POS.1)
2	GND	
3	VCC2(24V)	VCC2(POS.2)
4	J1	POS.1 :J1 and J2 conducting
5	J2	POS.2 :J2 and J3 conducting
6	J3	

## Outline Drawings [mm]

