

FEATURES

- Small Size
- High Accuracy
- High Stability
- Rugged Design

APPLICATIONS

- Wireless Communication
- Laboratory Test



Electrical Specifications

Frequency Range	0.9~4GHz
Bandwidth	100MHz, 200MHz
Attenuation Range	0~10dB
Attenuation Accuracy	±0.5dB
VSWR	1.5 max.
Insertion Loss	1.0dB max.
Impedance	50 Ohms
Average Power	50 Watts

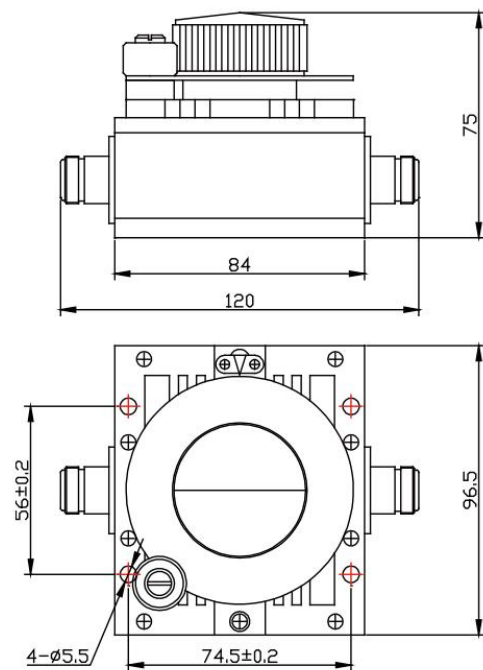
Mechanical Specifications

Connector	N female to N female
Connector Material	Brass Nickel Plated
Female Pin	Beryllium Copper, Gold Plated
Housing	Aluminum, Black Anodized
Temperature Range	-40°C ~ +65°C
Weight	1.2kg
Size	120×96.5×75mm
RoHS Status	RoHS Compliant

Ordering Information

50WVA	12096	-	10	-	1000	-	1200	-	N
RF Connector N:N female to N female									
Max Frequency(MHz)									
Min Frequency(MHz)									
Max Attenuation Value(dB)									
Attenuator Dimensions(mm)									
50W Variable Attenuator									

Outline Drawings[mm]



* 50WVA12096 becomes:
50WVA12096-10-1000-1200-N when start frequency is 1000MHz and bandwidth is 200MHz..
* 50WVA12096 becomes:
50WVA12096-10-1000-1100-N when start frequency is 1000MHz and bandwidth is 100MHz.