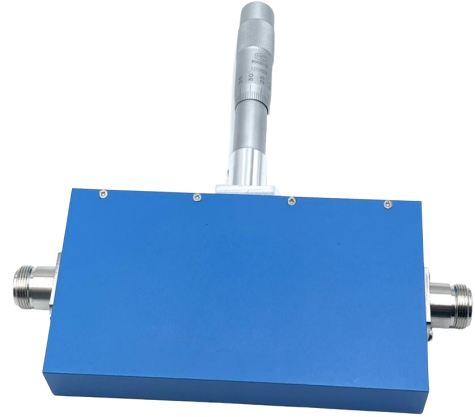


FEATURES

- ❑ Small Size
- ❑ High Accuracy
- ❑ High Stability
- ❑ Rugged Design

APPLICATIONS

- ❑ Wireless Communication
- ❑ Laboratory Test



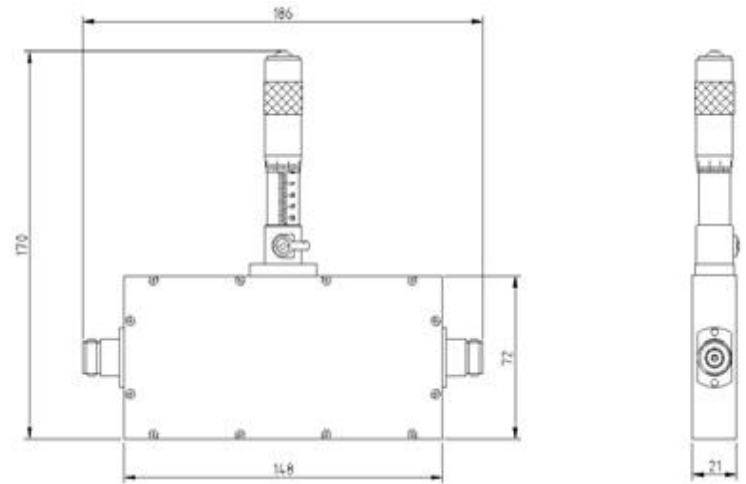
Electrical Specifications

Frequency Range	2~18GHz
Bandwidth	100%
Attenuation Range	0~40dB min.
VSWR	1.5 max.
Insertion Loss	1.2dB max.
Impedance	50 Ohms
Average Power	10 Watts

Mechanical Specifications

Connector	N female to N female
Connector Material	Brass Nickel Plated
Female Pin	Beryllium Copper, Gold Plated
Housing	Aluminum, Sandblasted Painting
Temperature Range	-40°C ~ +65°C
Weight	590g
Size	186×170×21mm
RoHS Status	RoHS Compliant

Outline Drawings[mm]



Ordering Information

10WVA	186170	-	40	-	2000	-	18000	-	N
RF Connector									
N:N female to N female									
Max Frequency(MHz)									
Min Frequency(MHz)									
Max Attenuation Value(dB)									
Attenuator Dimensions(mm)									
10W Variable Attenuator									

* For optimized performances, contact factory.