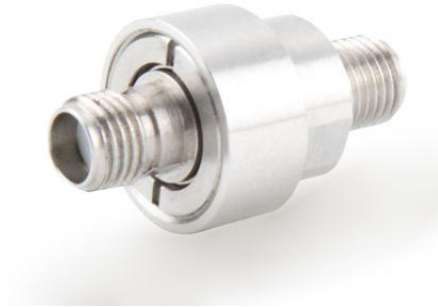


FEATURES

- Low Contact Resistance
- Large Volume Data Transmission without Delay
- Long Lifetime

APPLICATIONS

- Radar Antennas
- Satellite Communication Systems
- Medical Treatment Equipment
- Robotics



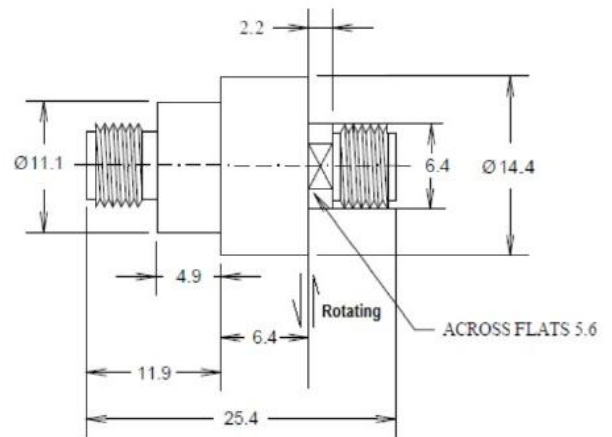
Electrical Specifications

Frequency	DC~18GHz
VSWR	1.2 max@DC~6GHz
	1.25 max@6~12GHz
	1.35 max@12~18GHz
VSWR Ripple	0.03 max
Insertion Loss	0.25dB@DC~6GHz
	0.35dB@6~12GHz
	0.5dB@12~18GHz
Insertion Loss Ripple	0.04dB max
Phase WOW	1° max
Average Power	200W max@1GHz
	30W max@18GHz
Peak Power	1.5kW max
Protection Degree	IP 40 acc. EN 60529

Mechanical Specifications

Connector Type	SMA female
Connector Material	Stainless Steel
Working Life	10 Million Revs
Rotating Speed	100 rpm max
Starting Torque	2N.cm max
Rotating Torque	2N.cm max
Connector Axial Load	±2N max
Contact Material	PTFE
Operating Humidity	0~85%RH
Operating Temperature	-40°C~+70°C
Storage Temperature	-50°C~+70°C

Outline Drawings[mm]



◇ Customization is available upon specific requests ◇