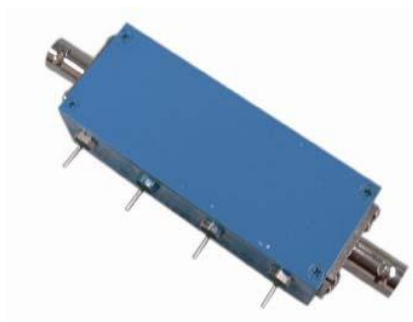


FEATURES

- Small Size
- High Accuracy
- High Stability

APPLICATIONS

- Laboratory Test and Measurement
- Wireless Communication



Electrical Specifications

Frequency Range	DC~1GHz
Impedance	75Ω nominal
Attenuation Range	0~40dB in 10dB steps
Attenuation Steps(dB)	10, 10, 20
VSWR	1.25 max
Accuracy	±0.3dB@ATTN≤10dB ±0.5dB@20dB
Insertion Loss	1.0dB max
Average Power	2W
Operating Voltage	+12V (TTL Controlled with drive circuit)

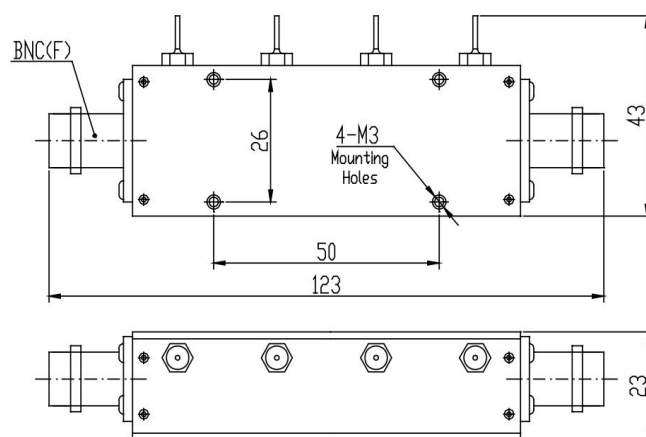
Operating Current	100mA max
Temperature Range	-40°C~+70°C
RoHS Status	RoHS Compliant

Mechanical Specifications

RF Connector	BNC female
Connector Body	Nickel Plated Brass
Female Pin	Gold Plated Beryllium Cooper
Housing	Aluminum, Anodic Oxidation
Size	123×43×23mm
Weight	125g

◇ Test Data is available at an additional cost ◇

Dimensions[mm]



Ordering Information

2W	PA	1	-	3	-	40	-	B	T
									Control
									T: TTL
									RF Connector
									B: BNC
									Total dB Value
									Cells No.
									Maximum Frequency(GHz)
									Programmable Attenuator
									Average Power(W)