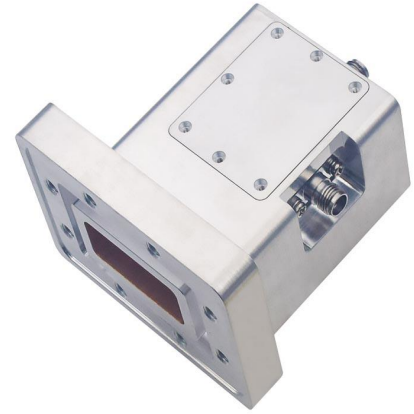


**SPECIFICATIONS**

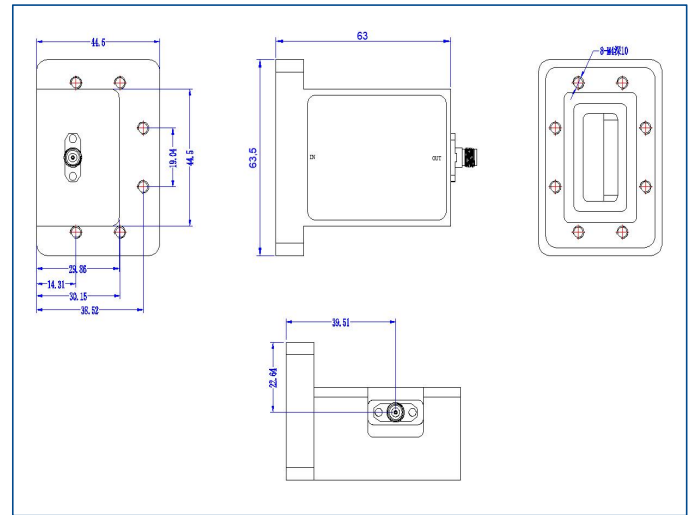
Frequency Range:	7.25~7.75 GHz
Gain	60dB min.
Gain Flatness	±2.0dB max.
Noise Figure	0.9dB max.
VSWR	2.0 max.
Output Power(P-1dB)	10dBm min.
Impedance	50Ω
Supply Voltage	+12V
Supply Current	300mA
Operating Temp.	-40°C~+85°C
Input Connector	SMA Female
Output Connector	WR112



**50 Ohm Typical Characteristics**

Freq. (MHz)	VSWR (S11)	VSWR (S22)	Small-Signal Gain (S21)	@1dB Compression (S21)	Noise Figure
Unit	:1	:1	dB	dBm	dB
7250	1.18	1.65	64.05	12.48	0.88
7286	1.19	1.64	63.83	12.41	0.82
7321	1.20	1.69	63.85	12.37	0.85
7357	1.21	1.63	63.80	12.34	0.79
7393	1.23	1.63	63.50	12.33	0.88
7429	1.24	1.62	63.80	12.32	0.84
7464	1.25	1.57	63.49	12.35	0.85
7500	1.26	1.57	63.79	12.37	0.87
7536	1.26	1.56	63.61	12.35	0.88
7571	1.26	1.55	63.45	12.32	0.86
7607	1.25	1.52	63.68	12.30	0.85
7643	1.25	1.51	63.60	12.26	0.81
7679	1.24	1.48	63.33	12.49	0.82
7714	1.23	1.48	63.40	12.48	0.74
7750	1.23	1.45	63.36	12.69	0.70

**Dimensions[mm]**



Typical Performance Curve

