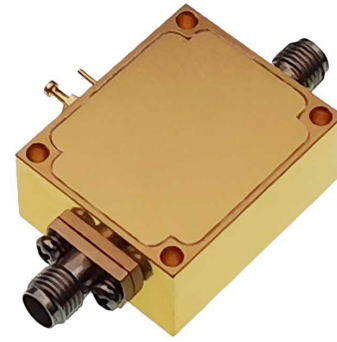


**Product Features**

- Wideband Power Amplifier
- Small Signal Gain 20dB typ.
- 50 Ohm Input and Output Matched
- 2.92mm female connector I/O
- Small Size, Light Weight



**SPECIFICATIONS**

Parameters	Min.	Typ.	Max.	Units
<b>Frequency Range</b>	15	-	43	GHz
<b>Small Signal Gain</b>	-	20	-	dB
<b>Output Power(P-1dB)</b>	-	29	-	dBm
<b>Saturated Output Power(Psat)</b>	-	30	-	dBm
<b>Input Return Loss</b>	-	14	-	dB
<b>Output Return Loss</b>	-	16	-	dB
<b>Noise Figure</b>	-	12	-	dB
<b>DC Bias Voltage</b>	+6	-	+15	V
<b>DC Bias Current</b>	-	900	-	mA
<b>Operating Temperature</b>	-40	-	+60	°C
<b>Storage Temperature</b>	-65	-	+125	°C
<b>Input/Output Connectors</b>	2.92mm female			
<b>Housing Material</b>	Aluminum Alloy			
<b>Size(without connectors)</b>	32mm×32mm×12mm			
<b>Weight</b>	27g			

**Dimensions[mm]**

