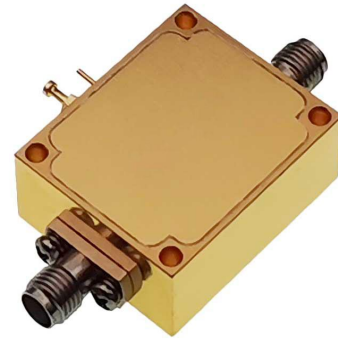


Product Features

- Wideband Power Amplifier
- Small Signal Gain 42dB typ.
- 50 Ohm Input and Output Matched
- SMA female connector I/O
- Small Size, Light Weight



SPECIFICATIONS

Parameters	Min.	Typ.	Max.	Units
Frequency Range	12	-	18	GHz
Small Signal Gain	-	42	-	dB
Output Power(P-1dB)	-	36	-	dBm
Saturated Output Power(Psat)	-	36.5	-	dBm
Input Return Loss	-	14	-	dB
Output Return Loss	-	8	-	dB
Noise Figure	-	7	-	dB
DC Bias Voltage	+9	-	+15	V
DC Bias Current	-	1550	-	mA
Operating Temperature	-40	-	+60	°C
Storage Temperature	-65	-	+125	°C
Input/Output Connectors	SMA female			
Housing Material	Aluminum Alloy			
Size(without connectors)	32mm×32mm×12mm			
Weight	27g			

Dimensions[mm]

