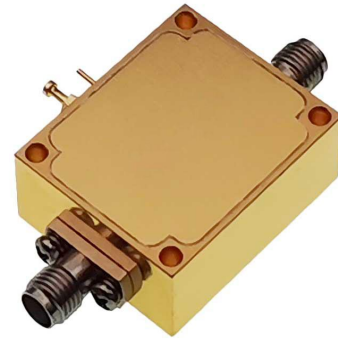


Product Features

- Wideband Power Amplifier
- Small Signal Gain 40dB typ.
- 50 Ohm Input and Output Matched
- SMA female connector I/O
- Small Size, Light Weight



SPECIFICATIONS

| Parameters | Min. | Typ. | Max. | Units |
|------------------------------|----------------|------|------|-------|
| Frequency Range | 8 | - | 12 | GHz |
| Small Signal Gain | - | 40 | - | dB |
| Output Power(P-1dB) | - | 31 | - | dBm |
| Saturated Output Power(Psat) | - | 31.5 | - | dBm |
| Input Return Loss | - | 15 | - | dB |
| Output Return Loss | - | 11 | - | dB |
| Noise Figure | - | 6 | - | dB |
| DC Bias Voltage | +9 | - | +15 | V |
| DC Bias Current | - | 310 | - | mA |
| Operating Temperature | -40 | - | +60 | °C |
| Storage Temperature | -65 | - | +125 | °C |
| Input/Output Connectors | SMA female | | | |
| Housing Material | Aluminum Alloy | | | |
| Size(without connectors) | 32mm×32mm×12mm | | | |
| Weight | 27g | | | |

Dimensions[mm]

