

**TMPS60-3-S DC-3 GHz, 60°/GHz, 100W, SMA Female**

**FEATURES**

- ❖ Frequency Range from DC to 3 GHz
- ❖ Power Handle Capability up to 100W(CW)
- ❖ Rotary Dial Design for Continuous Adjustmen
- ❖ Low Insertion Loss

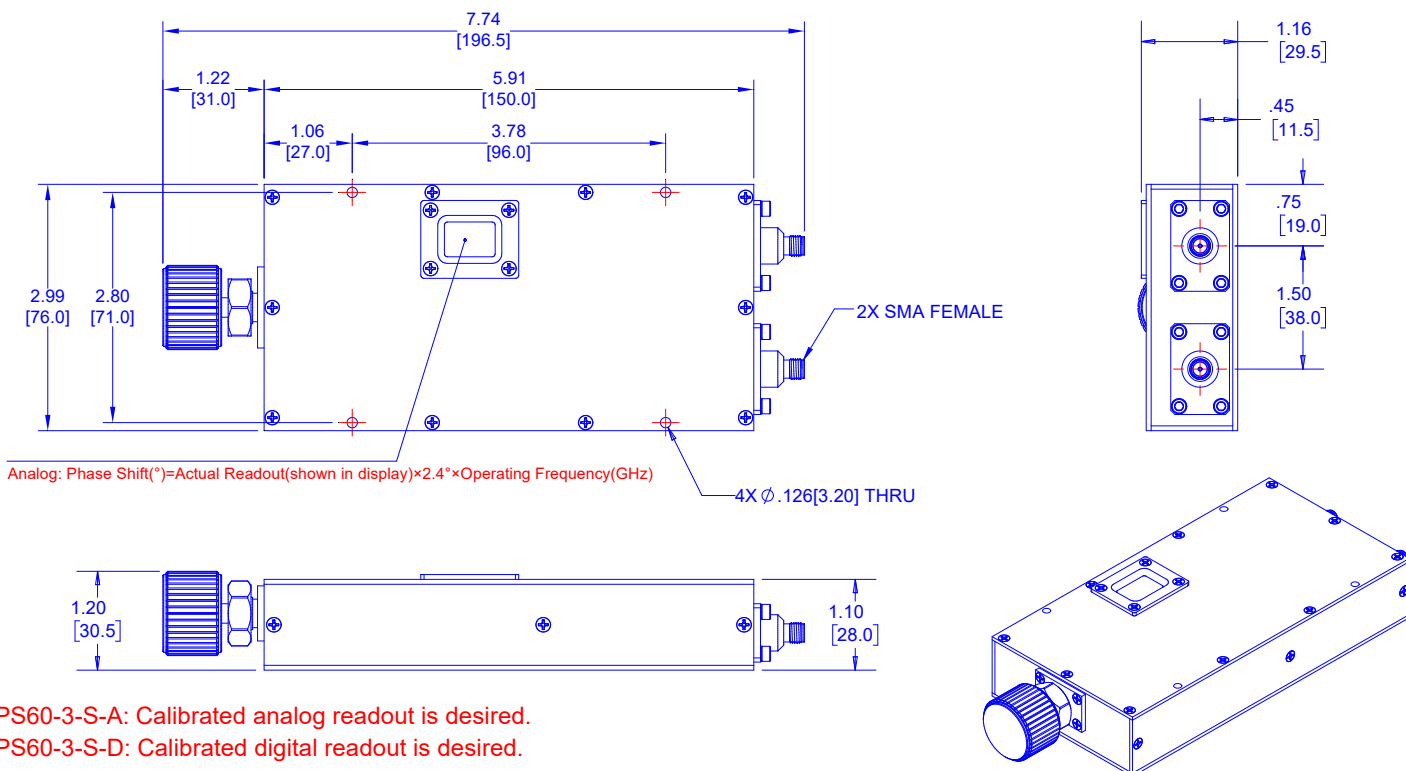
**APPLICATIONS**

- ❖ Test and Measurements
- ❖ Communications Systems
- ❖ Satellite Communications
- ❖ Radar Development
- ❖ Phase Array Antenna System

**SPECIFICATIONS**

Parameters	Min.	Typ.	Max.	Units
Frequency Range	DC	-	3	GHz
Impedance	-	50	-	Ohms
Phase Shift	0	-	180	°
Phase Adjustment	0	-	60	°/GHz
VSWR	-	-	1.4	:1
Insertion Loss	-	-	0.8	dB
Input Power, CW	-	-	100	W
Input Power, Peak(5μs pulse width, 2% duty cycle)	-	-	5	kW
Operating Temperature	-10	-	+50	°C
Storage Temperature	-40	-	+70	°C
Input/Output Connectors	SMA-Female			
Readout Options	A-Analog; D-Digital			
Weight	490g			
Surface Finishing	Blue Plated			
Material	Aluminum			

**Outline Drawing ❖ Analog [mm[inch]]**



TMPS60-3-S-A: Calibrated analog readout is desired.  
 TMPS60-3-S-D: Calibrated digital readout is desired.

Tolerances ±0.5[0.02]