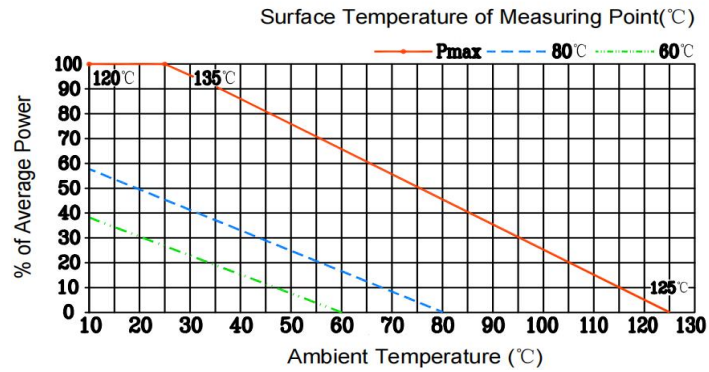


**SPECIFICATIONS**

Frequency Range:	DC~6 GHz
Input Avg Power:	250W@25°C
Impedance:	50 Ohms
Attenuation:	10-60dB
VSWR:	1.25 max.
Connector:	DIN 7/16-Male to DIN 7/16-Female
Operating Temp.:	-55°C~+125°C
Female Center Contact:	Gold plated beryllium copper
Male Center Contact:	Gold plated brass
Heat Sink:	Black Anodized Aluminum
Dimensions:	254×110×120mm
RoHS Status:	RoHS Compliant

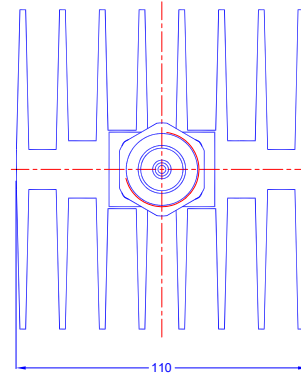
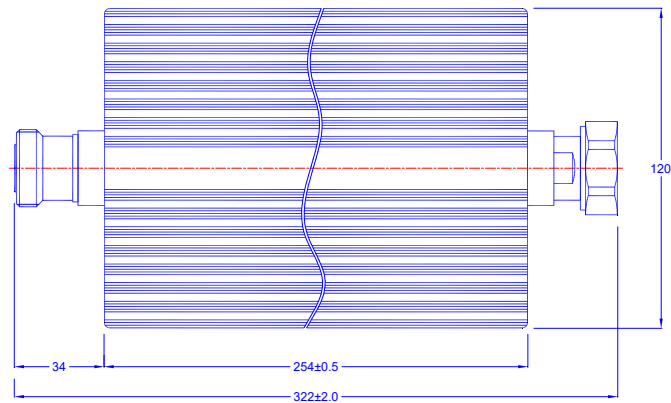
**Power/Temp Rating Curve**



**Maximum Deviation over Frequency**

Nominal ATTN(dB)	Frequency Range(GHz)			
	DC~4	DC~6	-	-
10	±0.7	±0.8	-	-
20	±0.7	±0.8	-	-
30	±0.8	±0.9	-	-
40	±0.9	±0.9	-	-
50-60	±0.9	±0.9	-	-
VSWR(max)	1.2	1.25	-	-

**Outline Drawing[mm]**



**Ordering Information**

<b>TMFA6</b>	<b>X</b>	<b>D</b>	<b>250</b>	<b>-</b>	<b>XX</b>
					XX: Attenuation dB value
					Average Power(W)
					RF Connector (D: DIN 7/16-Male to DIN 7/16-Female)
					X: Maximum Frequency(GHz) 03: DC~3 GHz 06: DC~6 GHz
Titan Microwave Fixed Attenuator					