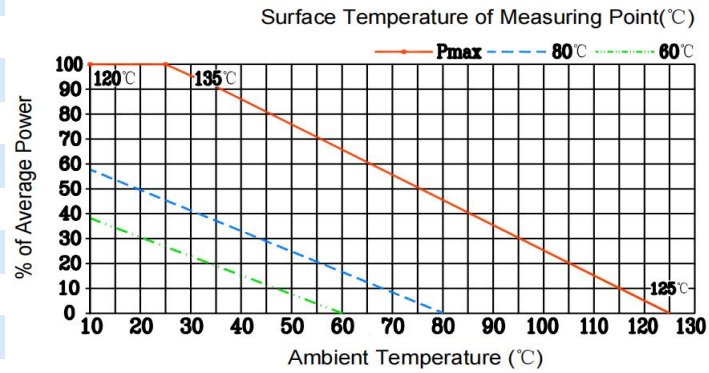


SPECIFICATIONS

Frequency Range:	DC~4 GHz
Input Avg Power:	1000W@25°C
Impedance:	50 Ohms
Attenuation:	30-50dB
VSWR:	1.35 max.
Connector:	N-Male to N-Female
Operating Temp.:	-55°C~+125°C
Female Center Contact:	Gold plated beryllium copper
Male Center Contact:	Gold plated brass
Heat Sink:	Black Anodized Aluminum
Dimensions:	560×140×360mm
RoHS Status:	RoHS Compliant

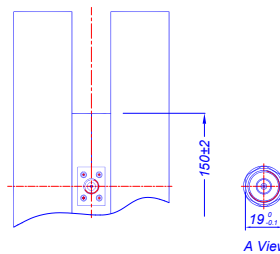
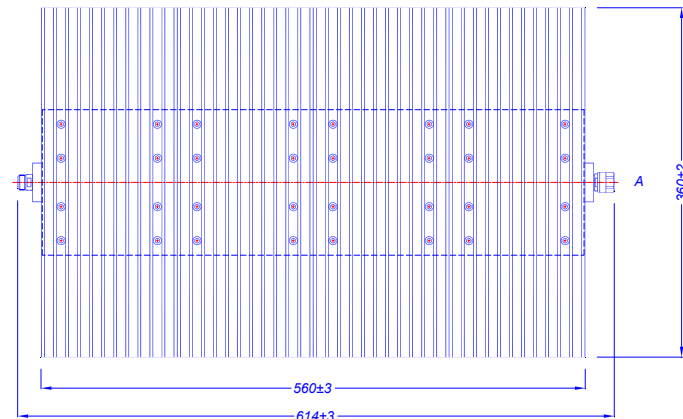
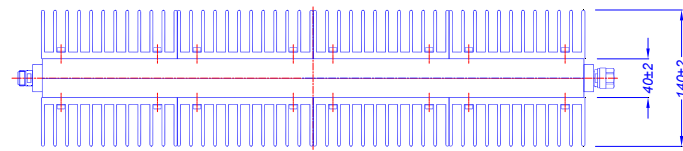
Power/Temp Rating Curve



Maximum Deviation over Frequency

Nominal ATTN(dB)	Frequency Range(GHz)			
	DC~4	-	-	-
30	±2.5	-	-	-
40	±2.5	-	-	-
50	±2.5	-	-	-
VSWR(max)	1.35	-	-	-

Outline Drawing[mm]



Ordering Information

TMFA	4	N	1000	-	XX
XX: Attenuation dB value					
Average Power(W)					
RF Connector (N: N-Male to N-Female)					
Maximum Frequency(GHz) 4: DC~4 GHz					
Titan Microwave Fixed Attenuator					