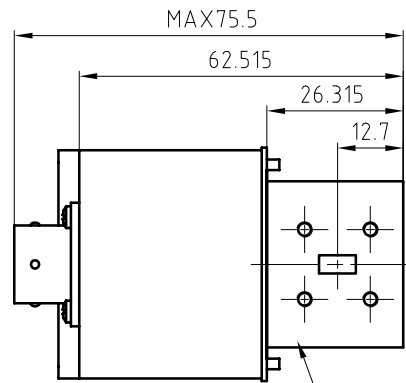
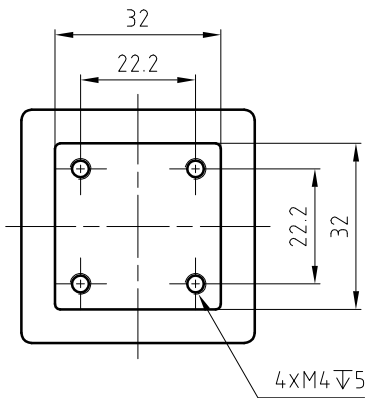
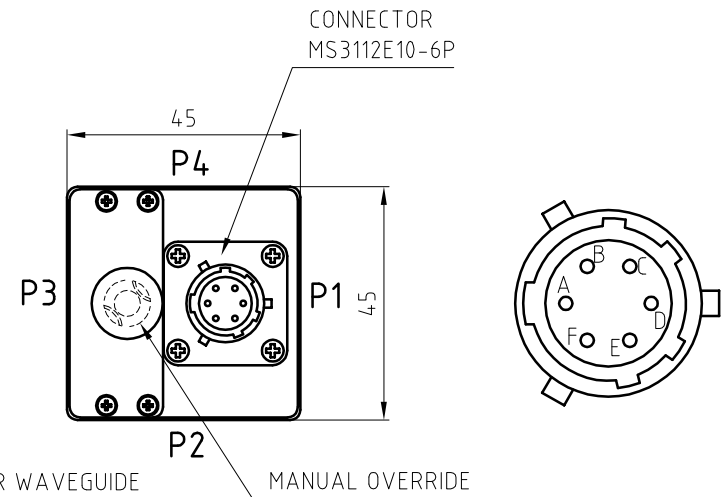


1 2 3 4 5 6 7 8

A  
B  
C  
D  
E  
F

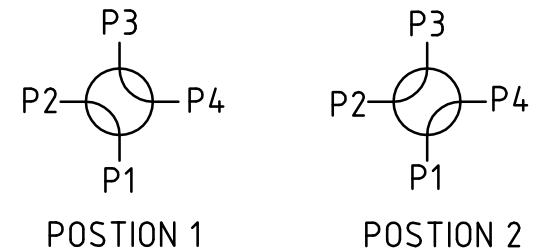
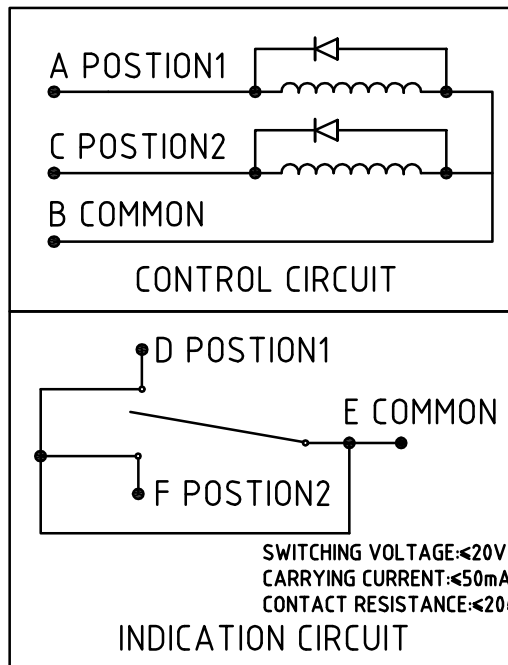


FLANGE: FBP320  
BJ320 (WR28) RECTANGULAR WAVEGUIDE



### SPECIFICATION

- FREQ RANGE: 26.5GHz--40.0GHz
- VSWR:  $\leq 1.15$
- INSERTION LOSS:  $\leq 0.15$ dB
- ISOLATION:  $\geq 55$ dB
- SWITCHING TIME:  $\leq 50$  mS
- VOLTAGE: 28VDC, DURATION  $\geq 50$  mS
- CURRENT:  $\leq 625$ mA @ (28VDC, 25°C)
- WORKING TEMPERATURE: -40°C--70°C
- LIFE: 100,000 CYCLES
- CONTROL MODE: LATCHING, MANUAL/ELECTRIC



EXCITATION AND SWITCH STATUS
A VDC, B GND; D-E CONNECTED; POSTION 1
C VDC, B GND; F-E CONNECTED; POSTION 2

**成都巨人微波**  
**TITAN MICROWAVE INC.**  
- A Professional RF & Microwave Components Supplier -

## BJ320 WAVEGUIDE SWITCH

1 2 3 4 5 6 7 8