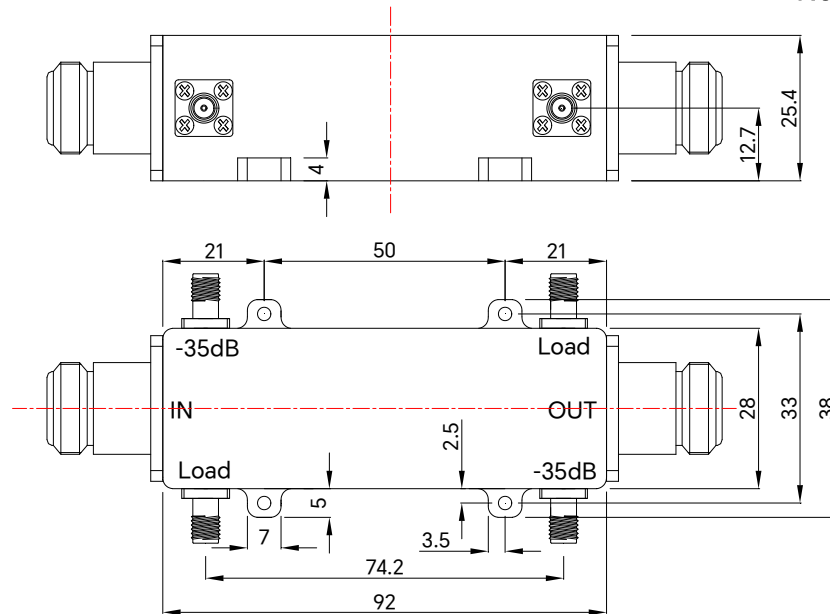


PART NUMBER TDDC-00700600-35NS500	REV.	DATE	COMMENTS	INITIAL
	1	2020/10/19	ENGINEERING RELEASE	

SPECIFICATIONS

Frequency Range 700~6000MHz
 Coupling 35±1.0dB Max
 Insertion Loss 0.5dB Max
 Coupling Accuracy ±1.0dB Max
 Directivity 12dB Min
 VSWR(Main) 1.4:1 Max
 VSWR(Secondary) 1.7:1 Max
 Average Power 500W(CW)
 Input & Output Connectors Type N-Female
 Coupling Connectors SMA-Female
 Operating Temperature -55°C~+85°C
 Surface Finish Electrically Conductive Oxidation

RoHS Compliant



Drawing not to scale, units:mm



www.titan-microwave.com
 Tel: +86 130 866 58398
 Email: sales@titan-microwave.com
 chris@titan-microwave.com

PART NUMBER TDDC-00700600-35NS500		DESCRIPTION Dual Directional Coupler, 0.7-6GHz Coupling 35dB, 500W, N-Female&SMA-Female
CAGE CODE	SIGNATURE <i>Chris Chen</i>	
EXCEPT AS OTHERWISE PROVIDED BY CONTRACTOR THIS DRAWING OR SPECIFICATION IS PROPERTY OF TITAN MICROWAVE INC. IT IS ISSUED IN STRICT CONFIDENCE AND SHALL NOT BE REPRODUCED OR USED AS THE BASIS.		