

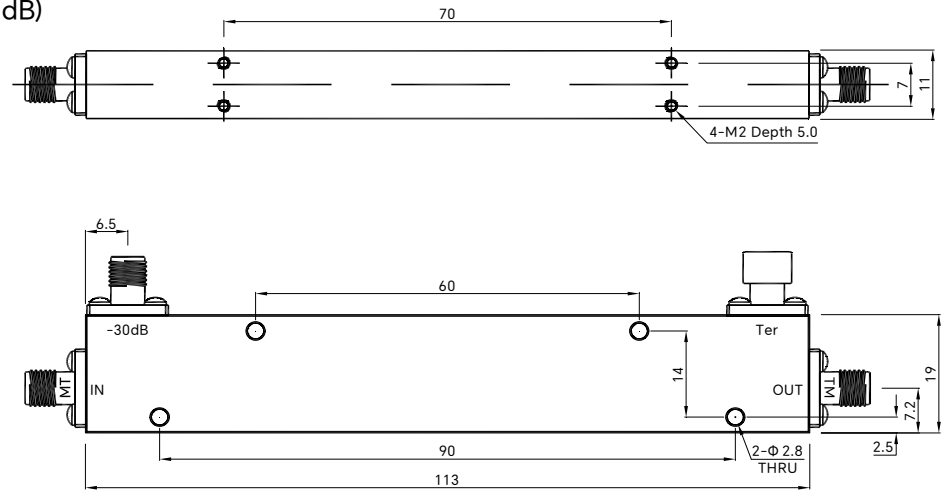
PART NUMBER
TMDC-01700850-30S50

REV.	DATE	COMMENTS	INITIAL
1	2021/7/11	ENGINEERING RELEASE	

Specifications

RoHS Compliant

- Frequency Range 1.7-8.5GHz
- Insertion Loss 0.8dB max (Excluding Coupling Loss 0.01dB)
- Nominal Coupling 30 ± 1.0dB max
- Coupling Sensitivity ± 1.0dB max
- Directivity 12dB min
- VSWR Primary 1.4:1 max
- VSWR Secondary 1.4:1 max
- Impedance 50 Ohms
- Power Handling 50W (Incident), 50W (Reflected)
- Connectors SMA-Female
- Center Contact Gold Plated Beryllium Copper
- Dimensions 113 × 19 × 11mm
- Surface Finish Black/Blue Painted
- Material Aluminum 6061
- Temperature Range -45°C~+85°C
- Weight 70g



Drawing not to scale, units:mm



www.titan-microwave.com
Tel: +86 130 866 58398
Email: sales@titan-microwave.com
chris@titan-microwave.com

PART NUMBER TMDC-01700850-30S50		DESCRIPTION Directional Coupler, 1.7~8.5GHz, 30 ± 1dB, 50W SMA-Female
CAGE CODE	SIGNATURE	
EXCEPT AS OTHERWISE PROVIDED BY CONTRACTOR THIS DRAWING OR SPECIFICATION IS PROPERTY OF TITAN MICROWAVE INC. IT IS ISSUED IN STRICT CONFIDENCE AND SHALL NOT BE REPRODUCED OR USED AS THE BASIS.		