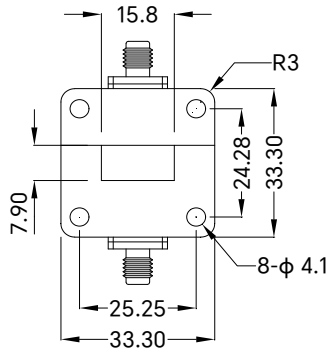


PART NUMBER
TWDDC62D30-40S

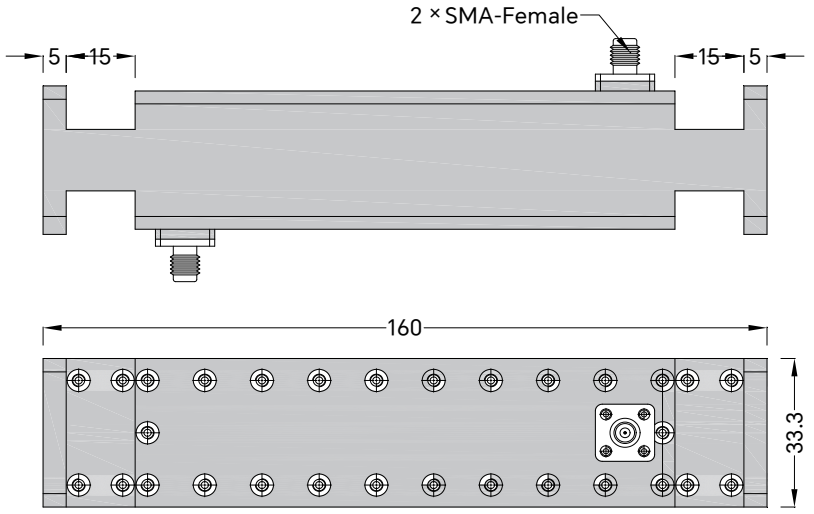
REV.	DATE	COMMENTS	INITIAL
1	2021/7/14	ENGINEERING RELEASE	

RoHS Compliant



SPECIFICATIONS

- Frequency Range 11.9-18GHz
- Nominal Coupling 40±1.5dB
- Directivity 30dB min
- VSWR Primary 1.1:1 max
- VSWR Secondary 1.25:1 max
- Impedance 50 Ohms
- Waveguide Type WR-62
- Flange Type FBP140(UBR) Flange
- Coupling Port SMA-Female
- Waveguide Body Aluminum, Gray Painted
- Connector Body Stainless Steel, Passivated
- Dimensions 160×33.3×33.3mm



Drawing not to scale, units:mm



www.titan-microwave.com
Tel: +86 185 8328 2993
Email: sales@titan-microwave.com
chris@titan-microwave.com

PART NUMBER TWDDC62D30-40S		DESCRIPTION Waveguide Dual Directional Coupler, 11.9-18GHz Coupling 40 ± 1.5dB, WR-62, SMA-Female
CAGE CODE	SIGNATURE	
EXCEPT AS OTHERWISE PROVIDED BY CONTRACTOR THIS DRAWING OR SPECIFICATION IS PROPERTY OF TITAN MICROWAVE INC. IT IS ISSUED IN STRICT CONFIDENCE AND SHALL NOT BE REPRODUCED OR USED AS THE BASIS.		