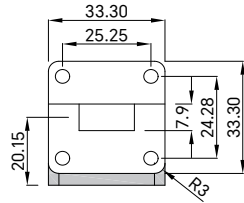


PART NUMBER  
**TWDC62D30C10**

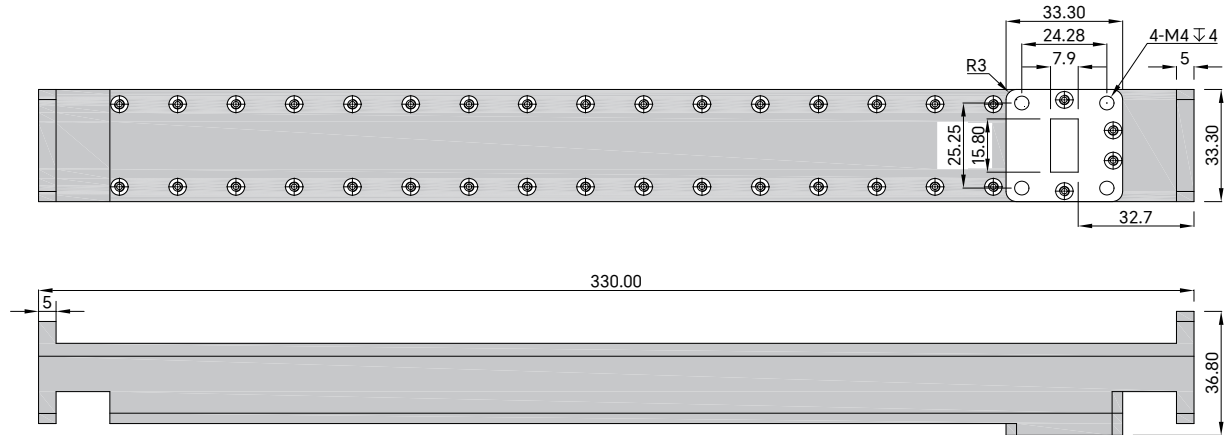
REV.	DATE	COMMENTS	INITIAL
1	2021/2/15	ENGINEERING RELEASE	



RoHS Compliant

**SPECIFICATIONS**

- Frequency Range ..... 12.4-18GHz
- Nominal Coupling ..... 10±0.7dB
- Directivity ..... 30dB min
- VSWR Primary ..... 1.1:1 max
- VSWR Secondary ..... 1.25:1 max
- Impedance ..... 50 Ohms
- Waveguide Type ..... WR-62
- Flange Type ..... FBP140(UBR) Flange
- Waveguide Body ..... Aluminum, Gray Painted
- Dimensions ..... 330×33.3×33.3mm



Drawing not to scale, units:mm



www.titan-microwave.com  
Tel: +86 185 8328 2993  
Email: sales@titan-microwave.com  
chris@titan-microwave.com

PART NUMBER <b>TWDC62D30C10</b>		DESCRIPTION <b>Waveguide Directional Coupler, WR-62 12.4-18GHz, Coupling 10 ± 0.7dB</b>
CAGE CODE	SIGNATURE _____	
EXCEPT AS OTHERWISE PROVIDED BY CONTRACTOR THIS DRAWING OR SPECIFICATION IS PROPERTY OF TITAN MICROWAVE INC. IT IS ISSUED IN STRICT CONFIDENCE AND SHALL NOT BE REPRODUCED OR USED AS THE BASIS.		