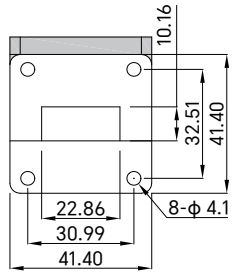


PART NUMBER
TWDC90D30C20

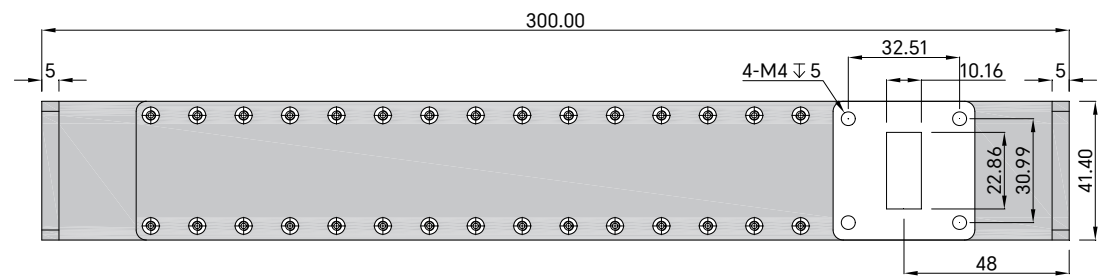
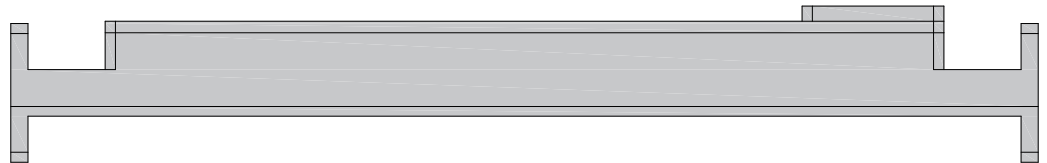
REV.	DATE	COMMENTS	INITIAL
1	2021/4/25	ENGINEERING RELEASE	



RoHS Compliant

Specifications

Frequency Range	8.2-12.4GHz
Coupling	20±1.0dB
Directivity	30dB min
VSWR Primary	1.1:1 max
VSWR Secondary	1.3:1 max
Impedance	50 Ohms
Waveguide Type	WR-90
Flange Type	FBP100(UBR) Flange
Waveguide Body	Aluminum, Gray Painted
Dimensions	300×41.4×41.4mm



Drawing not to scale, units:mm



www.titan-microwave.com
 Tel: +86 185 8328 2993
 Email: sales@titan-microwave.com
 chris@titan-microwave.com

PART NUMBER		DESCRIPTION Waveguide Broadwall Directional Coupler 8.2-12.4GHz, Coupling 20 ± 1.0dB, WR-90
TWDC90D30C20		
CAGE CODE	SIGNATURE	
EXCEPT AS OTHERWISE PROVIDED BY CONTRACTOR THIS DRAWING OR SPECIFICATION IS PROPERTY OF TITAN MICROWAVE INC. IT IS ISSUED IN STRICT CONFIDENCE AND SHALL NOT BE REPRODUCED OR USED AS THE BASIS.		