

Datasheet

Model Number : TMFA2WS18-~~xx~~

Coaxial Fixed Attenuator, DC-18GHz

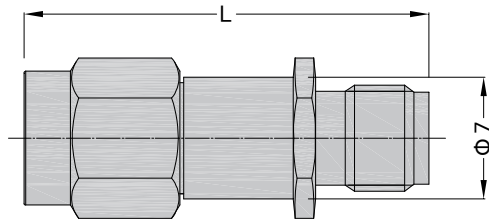
1-30dB, 2W, SMA-Male & SMA-Female

Specifications

x x indicates Attenuation value in dB

Frequency Range	DC-18GHz	
VSWR	1.30 max	
Nominal Power Handling	2W	
Impedance	50 Ohms	
Attenuation	1-10dB	15, 20, 25, 30dB
Attenuation Accuracy	±0.5dB	±1.0dB
Connectors	SMA-Male & SMA-Female	
Dimensions	Φ7×Lmm	
Operating Temperature	-55°C~+125°C	
Weight	5g	
RoHS Status	RoHS Compliant	

Outline Drawing [mm[inch]]:



L=21.8mm@1-10dB

L=25.0mm@15, 20, 25, 30dB