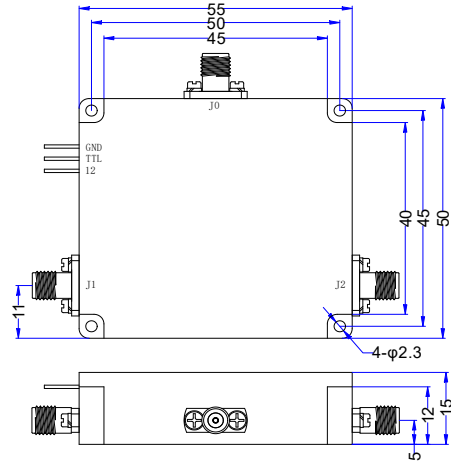


TMPS2-00030050-10S-R **0.03 to 0.5GHz, 10W, SMA-Female Reflective, SPDT, Pin Diode Switch**

Electrical Characteristics

- Frequency Range 0.03~0.5GHz
- Insertion Loss 0.6dB max
- VSWR 1.6 max
- Isolation 70dB min
- Switching Speed 1ms max
- Power Supply +12V/250mA
- Power Handling 10W CW
- Control Port $\Phi 0.8$ mm pin
- Dimensions 55 × 50 × 15mm
- RF Connectors SMA-Female

Outline Drawing(mm)



TTL	J1	J2
0	ON	OFF
1	OFF	ON