

Failsafe/Latching

❖ Features

- DC-12.4 GHz
- Low VSWR
- Low Loss
- High Isolation
- N(f) connectors

❖ RF Characteristics

Frequency	Ins. Loss	Isolation	VSWR	Average Power
GHz	dB	dB		W
DC~5	0.3	70	1.3	350
5~12.4	0.5	60	1.5	250

Operating Voltage/Coil Current

Operating Voltage(V)		12	24	28
Current (mA)	Failsafe	350	200	180
	Latching	400	200	185

TTL	Low(V)	High	
	0~0.3	3~5V	1.4mA

Indicator Rating	V(max)	mA(max)	Ω(max)
	50	100	15

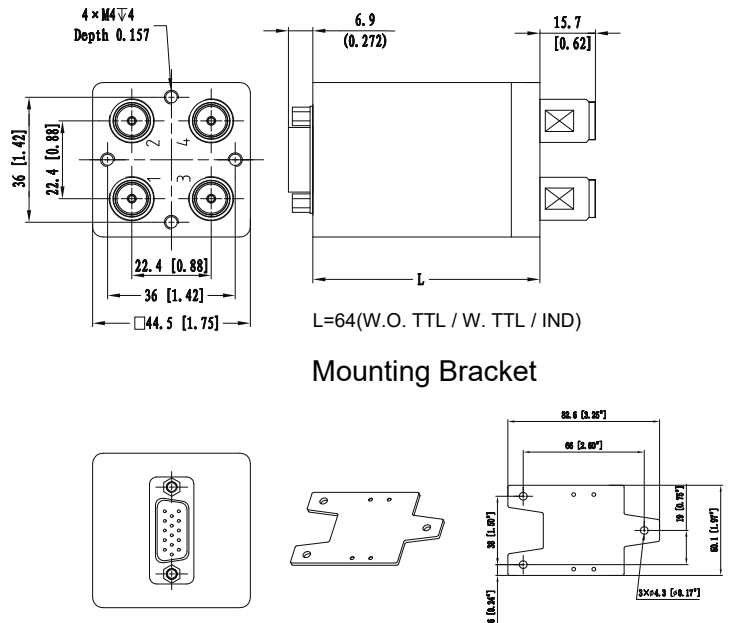
* +Vdc and GND must be connected to operate



❖ Specifications

Frequency Range	DC-12.4 GHz
Impedance	50 Ohms
Switching Sequence	Break Before Make
Switching Time	15mS max
Operating Life	2 million cycles
Shock, Non-operating	50G, 1/2 Sine, 11ms
Vibration, Operating	20-2000Hz, 10G RMS
RF Interface	N female
Control Connector	D-SUB 15Pin Male
Storage Temperature	-55°C~+85°C
Operating Temperature	-25°C~+65°C (Standard)
	-45°C~+85°C (Extended Temp. 1)
	-55°C~+85°C (Extended Temp. 2)
Weight	380g

❖ Outline Drawing[mm[inch]]



❖ Ordering Information

TCS22H - N F 12 24 - 1 0 S 1

Connectors
N: N female

Actuator
F: Failsafe
L: Latching

Frequency
6: DC~6GHz
8: DC~8GHz
12: DC~12.4GHz

Voltage
5: 5V
12: 12V
24: 24V
28: 28V

Special Options
0: Ground Plane
1: TTL Driver
2: Positive Common
3: Self Cut-off
4: Ground Plane + IND
5: TTL Driver + IND
6: Positive Common + IND

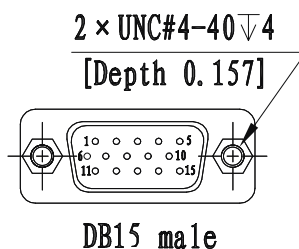
Temperature
0: Standard
1: -45~+85°C
2: -55~+85°C

Actuator Terminals
1: D-SUB 15PIN Male

Installation
S: Standard
B: Mounting Bracket

(IND=Indicators)

Failsafe/Latching



Truth Table

FAILSAFE W/O TTL

D-SUB 15Pin Male	Pin No.	1	2	3~11	12	13	14	15
	Description	GND	V	N/A	VDC	IND 1	IND 2	IND COM
RF Path	OFF/RF 1-2, 3-4	-	RF 1-3, 2-4	-	-	RF 1-2, 3-4	RF 1-3, 2-4	-

FAILSAFE W/ TTL

D-SUB 15Pin Male	Pin No.	1	2	3	4~12	13	14	15
	Description	VDC	GND	TTL	N/A	IND 1	IND 2	IND COM
RF Path	OFF/RF 1-2, 3-4	-	-	RF 1-3, 2-4	-	RF 1-2, 3-4	RF 1-3, 2-4	-

LATCHING W/O TTL

D-SUB 15Pin Male	Pin No.	1	2	3	4~11	12	13	14	15
	Description	V1	V2	GND	N/A	VDC	IND 1	IND 2	IND COM
RF Path	-	RF 1-2, 3-4	RF 1-3, 2-4	-	-	-	RF1-2,3-4	RF1-3,2-4	-

LATCHING W/ TTL

D-SUB 15Pin Male	Pin No.	1	2	3	4	5~12	13	14	15
	Description	VDC	GND	TTL	TTL	N/A	IND 1	IND 2	IND COM
RF Path	-			RF 1-2, 3-4	RF 1-3, 2-4	-	RF1-2,3-4	RF1-3,2-4	-