

REV	DESCRIPTION OF REVISION	By	DATE	APPROVED
A	INITIAL RELEASE	C. Cai	2023/9/12	C. Chen

TECHNICAL DATA

► Electrical Data

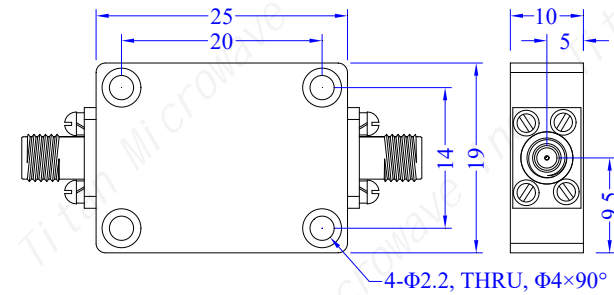
Pass Band Frequency	DC-14GHz
Pass Band Insertion Loss	≤1.5dB
Pass Band VSWR	≤1.5:1
Stop Band Rejection	≥50dB@16.5~28GHz
Impedance	50 Ohms
Power Handling	≤20W

► Mechanical Data

Dimensions	25×19×10mm
Connectors	SMA-Female(stainless steel)
Material	6061 Aluminum Alloy

► Environmental Data

Temperature Range	-40℃~+70℃
-------------------	-----------



Notes:

- ALL SPECIFICATIONS ARE SUBJECT TO CHANGE WITHOUT NOTICE AT ANY TIME
- CUSTOMER OUTLINE DRAWING FOR REFERENCE ONLY

DRAWN: L. Ma 12/09/23		
ENGINEER: J. Zhu 12/09/23		
APPROVED: C. Chen 12/09/23		
TOLERANCE UNLESS OTHERWISE SPECIFIED		
x	±0.50	[0.019"]
.x	±0.20	[0.008"]
.xx	±0.10	[0.004"]
ANGLES	±1°	

TITLE:

Low Pass Filter, DC-14GHz, Stop Band Rejection 50dB, 20W, SMA-Female

PART No.:

TLF-14000-50S



www.titan-microwave.com



DIMENSIONS IN MILLIMETERS(mm)

SIZE: A4	SCALE:	SHEET: 1/1	REV: A
-------------	--------	---------------	-----------