

REV	DESCRIPTION OF REVISION	By	DATE	APPROVED
A	INITIAL RELEASE	C. Cai	2022/12/21	C. Chen

### TECHNICAL DATA

#### ► Electrical Data

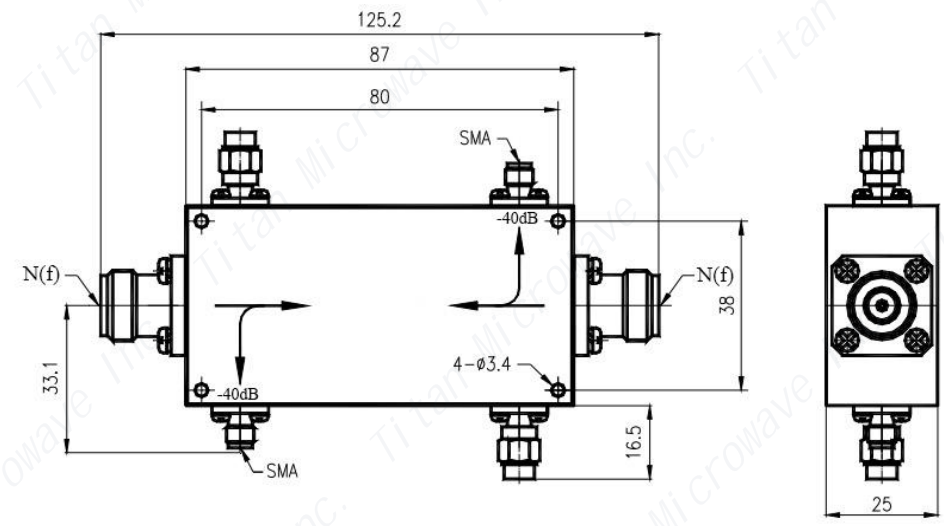
Frequency Range	2000~18000MHz
Nominal Coupling	40±1.5dB max
Insertion Loss	0.5dB max
Main Line VSWR	1.4 max
Coupled Line VSWR	1.6 max
Directivity	12dB min@2~12GHz 10dB min@2~18GHz
Impedance	50 Ohms
Average Power	400W
Peak Power	3kW max

#### ► Mechanical Data


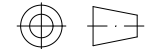
Input/Output Connectors	N-Female & SMA-Female
Housing Material	Aluminum 6061
Surface Finish	Black/Blue/Gray Paint
Dimensions	87×38×25mm

#### ► Environmental Data

Operating Temperature	-40℃~+70℃
-----------------------	-----------



- Notes:
- ALL SPECIFICATIONS ARE SUBJECT TO CHANGE WITHOUT NOTICE AT ANY TIME
  - CUSTOMER OUTLINE DRAWING FOR REFERENCE ONLY

DRAWN: L. Ma 21/12/22	TITLE: Dual Directional Coupler, 2-18GHz, Coupling 40dB, 400W, N/SMA-Female	 <b>成都巨人微波</b> <b>TITAN MICROWAVE INC.</b> <small>- A Professional RF &amp; Microwave Components Supplier -</small>		www.titan-microwave.com		
ENGINEER: J. Zhu 21/12/22						
APPROVED: C. Chen 21/12/22		PART No.:	 DIMENSIONS IN MILLIMETERS(mm)	SIZE: A4	SCALE:	SHEET: 1/1
TOLERANCE UNLESS OTHERWISE SPECIFIED	TDDC-02001800-40NS400					
x ±0.50 [0.019"]						
.x ±0.20 [0.008"]						
.xx ±0.10 [0.004"]						
ANGLES ±1°						