

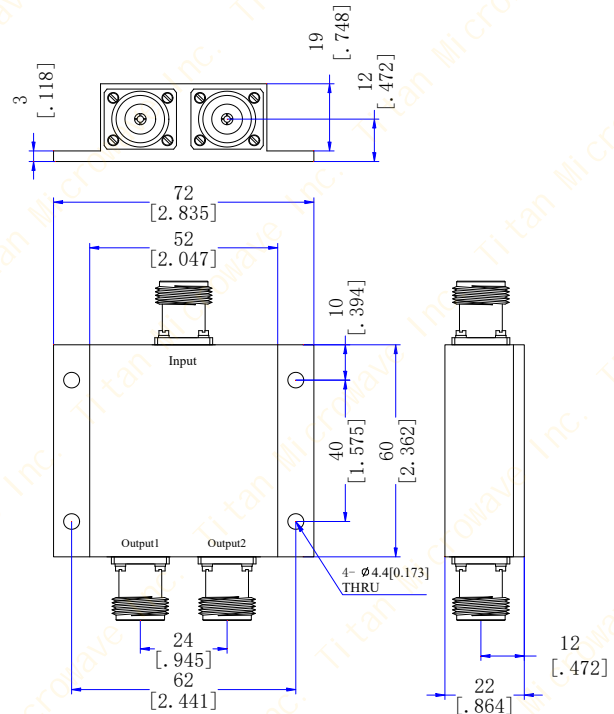
**TMPD2-00500600-20N**

**0.5 to 6 GHz, 20W, N-Female  
2-WAY POWER DIVIDER**

**Electrical Characteristics**

<b>Frequency Range</b> .....	500~6000MHz
<b>Insertion Loss</b> .....	1.5dB max (excluding theoretical loss 3.0dB)
<b>Amplitude Balance</b> .....	±0.2dB
<b>Phase Balance</b> .....	±3°
<b>VSWR(input port)</b> .....	1.30:1 max
<b>VSWR(output ports)</b> .....	1.20:1 max
<b>Isolation</b> .....	20dB min
<b>Impedance</b> .....	50 Ohms
<b>Power Handling</b> .....	20W(as a splitter) 1W(as a combiner)
<b>IP Grade</b> .....	IP65

**Outline Drawing(mm[inch])**



**Mechanical & Environmental Characteristics**

<b>Dimensions</b> .....	72 × 60 × 22mm
<b>RF Connectors</b> .....	N-Female
<b>Housing Material</b> .....	Aluminum
<b>Surface Finishing</b> .....	Black/Blue/Black Painted
<b>Operating Temperature</b> .....	-35°C~+75°C
<b>Storage Temperature</b> .....	-50°C~+85°C