

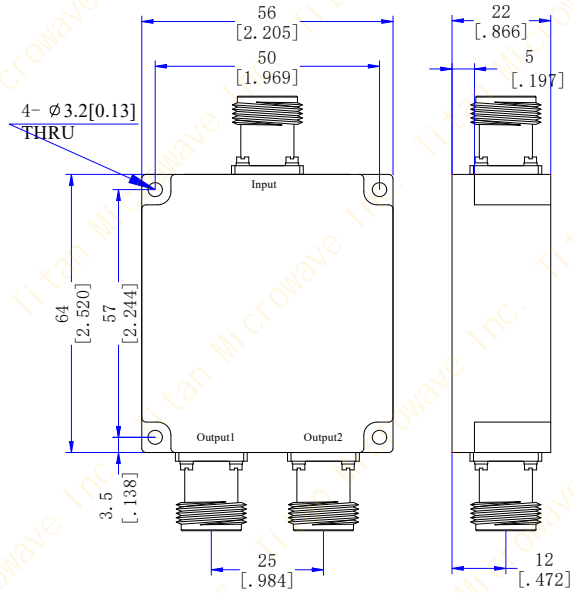
TMPD2-01000300-100N

**1 to 3 GHz, 100W, N-Female
 2-WAY POWER DIVIDER**

Electrical Characteristics

Frequency Range	1000~3000MHz
Insertion Loss	0.5dB max
(excluding theoretical loss 3.0dB)	
Amplitude Balance	±0.1dB
Phase Balance	±2°
VSWR(input port)	1.30:1 max
VSWR(output ports)	1.20:1 max
Isolation	18dB min
Impedance	50 Ohms
Power Handling	100W(as a splitter)
.....	5W(as a combiner)

Outline Drawing(mm[inch])



Mechanical & Environmental Characteristics

Dimensions	56 × 64 × 22mm
RF Connectors	N-Female
Housing Material	Aluminum
Surface Finishing	Conductive Oxidation
Operating Temperature	-35°C~+75°C
Storage Temperature	-50°C~+105°C