

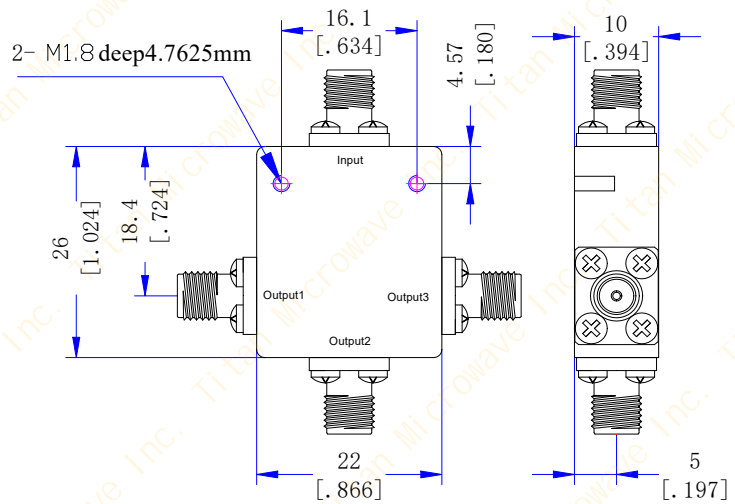
**TMPD3-06001800-10SA**

**6 to 18 GHz, 10W, SMA-Female  
3-WAY POWER DIVIDER**

**Electrical Characteristics**

<b>Frequency Range</b> .....	6~18GHz
<b>Insertion Loss</b> .....	1.02dB max (excluding theoretical loss 4.8dB)
<b>Amplitude Balance</b> .....	±0.6dB
<b>Phase Balance</b> .....	±6°
<b>VSWR(input port)</b> .....	1.5:1 max
<b>VSWR(output ports)</b> .....	1.5:1 max
<b>Isolation</b> .....	18dB min
<b>Impedance</b> .....	50 Ohms
<b>Power Rating</b> .....	10W(as a splitter) 1W(as a combiner)

**Outline Drawing(mm[inch])**



**Mechanical & Environmental Characteristics**

<b>Dimensions</b> .....	26 × 22 × 10mm
<b>RF Connectors</b> .....	SMA-Female
<b>Surface Finishing</b> .....	Black Paint
<b>Operating Temperature</b> .....	-40°C~+70°C
<b>Weight</b> .....	30g