

REV	DESCRIPTION OF REVISION	By	DATE	APPROVED
A	INITIAL RELEASE	C. Cai	2025/3/24	C. Chen

TECHNICAL DATA

► Electrical Data

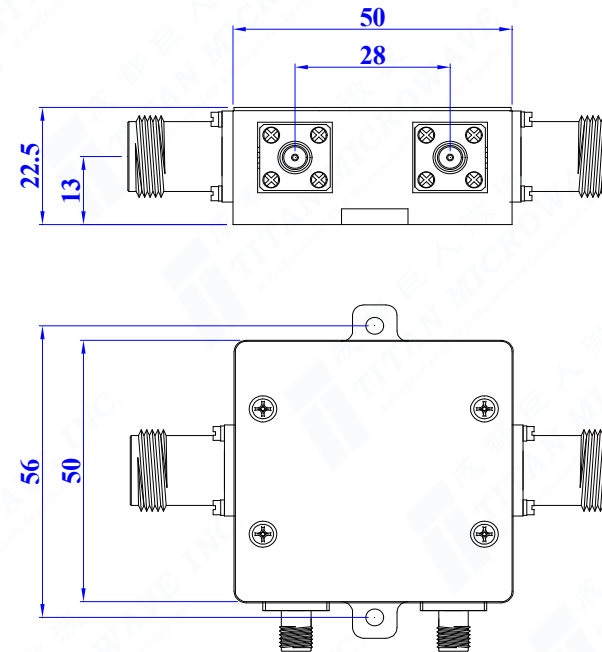
Frequency Range	4000~6000MHz
Nominal Coupling	40±1.5dB
Insertion Loss	0.6dB max
Primary Line VSWR	1.3:1 max
Directivity	10dB min
Impedance	50 Ohms
Primary Line Power	400W

► Mechanical Data

Input/Output Connectors	N-Female
Coupled Connector	SMA-Female
Body Material	Aluminum
Surface Finish	Conductive Oxide
Dimensions	50×50×22.5mm




► Environmental Data

Operating Temperature	-40℃~+70℃
-----------------------	-----------



Notes:

- ALL SPECIFICATIONS ARE SUBJECT TO CHANGE WITHOUT NOTICE AT ANY TIME
- CUSTOMER OUTLINE DRAWING FOR REFERENCE ONLY

DRAWN: L. Ma 24/03/25			TITLE: Single Directional Coupler, 4~6GHz, 40dB, 400W N-Female & SMA-Female		<div>成都巨人微波 TITAN MICROWAVE INC. <i>- A Professional RF & Microwave Components Supplier -</i></div> <div>www.titan-microwave.com</div>					
ENGINEER: J. Zhu 24/03/25										
APPROVED: C. Chen 24/03/25										
TOLERANCE UNLESS OTHERWISE SPECIFIED			PART No.: TMDC-04000600-40NS400		<div></div> <div>DIMENSIONS IN MILLIMETERS(mm)</div>					
x	±0.50	[0.019"]								
.x	±0.20	[0.008"]								
.xx	±0.10	[0.004"]								
ANGLES	±1°									
			SIZE:		SCALE:		SHEET:		REV:	
			A4				1/1		A	